

Multifunctional Coating Thickness Gauge with separate exchangeable probes

The Surfix® Pro S is a compact, lightweight, multifunctional fully menu driven coating thickness gauge for fast, precise, non-destructive coating thickness measurement for varnish, paint and electroplated coatings on iron/steel and varnish, paint and anodizing coatings on non-ferrous metals and on austenitic stainless steels.

- 1 Model:** Surfix® Pro S
8 Probes: Wide range of probes for universal and special measurement tasks

Measuring Range: 0 – 10 mm (0 – 400 mils)

Extensive Data Memory: The recording and further processing of stored measurement data are just as easy as to carry out the measurement itself. The file names can be alphanumerically assigned via the input panel and managed in the data memory



All separate exchangeable probes are machined to ultra-high standards and utilize a unique, hard-metal probe tip which prevents probe wear. The V-notched foot of the standard probes provides a stable footing on small cylindrical parts. It can be removed to expose a "micro-probe" sensor perfect to measure on small measuring areas and in cavities.

Features

- Innovative and user-friendly measuring techniques
- Online statistics with all available statistical parameters
- Data transfer to printer or PC via infrared or serial RS232 interface
- The Surfix® Pro S identifies the substrate and activates the appropriate measuring procedure
- The scan mode enables a continuous measurement
- Free choice of different languages ensures easy operation
- The uniform contact pressure of the sensor is minimized, preventing scratches & indentations to sensitive surfaces
- Optional high temperature foot for measuring on surfaces up to 150 °C (302 °F)
- Manufacturer's Certificate and one year warranty included



Test Stand (optional)




- Designed for smooth, repeatable measurements for coating thickness applications
- Spring-loaded lever for fast, precise travel
- Compact size and light weight makes it the ideal test stand for all workplaces



Specifications Surfix® Pro S for FN 1.5 probe

Measuring principle:	Magnetic induction principle (F-Mode) for ferrous metals Eddy-current principle (N-Mode) for non-ferrous metals FN-Mode for all metals
Range:	0 – 1500 µm (0 – 60 mils)
Accuracy:	± (1 µm / 0.04 mils +1% of reading)
Resolution:	0.1 µm / 0.004 mils or < 0.2% of reading
Display:	Backlight, 4-digit alphanum., height 10 mm (0.4 ")
Min. Measuring Area:	5 mm x 5 mm (0.2 " x 0.2 ")
Min. Curvature Radius:	Convex : 1.5 mm (0.06 ") Concave : 5 mm (0.2 ")
Min. Substrate Thickness:	Ferrous: 0.2 mm / 8 mils Non-Ferrous: 50 µm / 2 mils
Calibration:	Factory -, zero -, foil -, two-foil -, CTC - calibration, offset-function: add. or subtract. of a const. value
Memory:	10000 readings in max. 250 selectable files, alphanumerical file names, stored readings and statistical values individually recallable
Statistics Program:	Single/block-value: n, \bar{x} , s, kvar, min, max, cp, cpk
Data Output:	Infrared and serial RS232 interface
Operating Temp.:	0 °C – 50 °C / 32 °F – 122 °F
Surface Temp.:	-15 °C – 60 °C / 5 °F – 140 °F (standard) -15 °C – 150 °C / 5 °F – 302 °F (w/opt. foot)
Power:	2 AA, 1.5V
Dimensions:	137 mm x 66 mm x 23 mm (5.4" x 2.6" x 0.9")
Weight:	225 g (8 oz) incl. FN1.5 probe and batteries
Protection Class:	IP 52 (proof against dust and dripping water)
Standards:	DIN, ISO, ASTM, BS

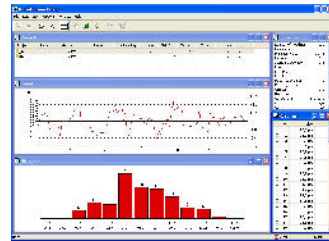
Coating Thickness Probes

Type	Measuring Range	Style
FN 1.5	0 – 1500 µm (0 – 60 mils)	
F 1.5	0 – 1500 µm (0 – 60 mils)	
N 1.5	0 – 1500 µm (0 – 60 mils)	
FN 0.2	0 – 200 µm (0 – 8 mils)	
FN 3.5	0 – 3500/3000 µm (0 – 140/120 mils)	
F 3.5	0 – 3500 µm (0 – 140 mils)	
F 10	0 – 10 mm (0 – 400 mils)	
FN/90°	0 – 1500 µm (0 – 60 mils)	



Printer PrintFix (optional)

Portable thermal-printer with an integrated infrared interface for wireless data transfer. It can print values stored in the Surfix® Pro S gauge quickly and reliably locally or later in the office.



Software ProSoft (optional)

Database program for data transfer, data administration and management. It is able to manage all measurement sets, or individual sets, stored in Surfix® Pro S



Delivery schedule Surfix® Pro S with e.g. probe FN 1.5:

Gauge incl. probe, 2 calibration foils, ferrous and non-ferrous zero plate, 2 AA batteries, transfer program FixSoft, manual and manufacturer's certificate all in a rugged plastic carrying case. Delivery schedule varies depending on the probe. Carrying pouch optional.



Physikalische Oberflächen-Messtechnik
Physical Surface Testing Technology

PHYNIX GmbH & Co. KG

Alexe-Altenkirch-Straße 3

50739 Köln, Germany

Phone: +49(0)221/17964-30

Fax: +49(0)221/17964-35

info@phynix.de

www.phynix.de